

FLORAL

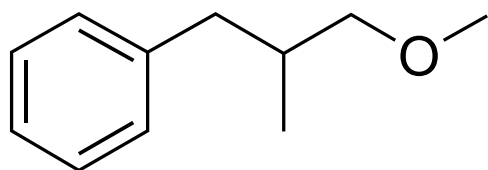
CHEMICAL SYNTHESIS

Benzene, (3-methoxy-2-methylpropyl)-

CAS NUMBER 0120811-92-9  
REACH NUMBER 01-2120138933-52  
FEMA NUMBER

BIODEGRADABILITY  Readily

GREEN CHEMISTRY SCORE  70 - 100%



### OLFACTIVE DESCRIPTION

This natural floral, green note has a rose petal character with hints of exotic fruits.

### PERFUMERY USAGE

Excellent with both rose and green notes.

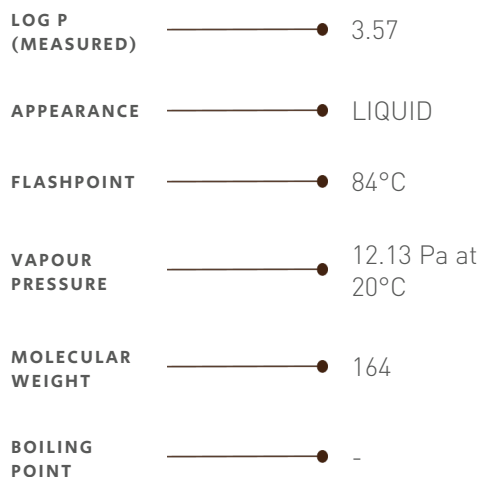
Extremely stable including in chlorine bleach. An incredible stability with a so distinctive top note...

### TENACITY

Lasts 3 hours on a smelling strip



### PHYSICO-CHEMICAL PROPERTIES



### STABILITY & PERFORMANCE

RECOMMENDED APPLICATIONS	STABILITY	CONCENTRATION AVG - MAX	SUBSTANTIVITY & REMARKS	
FINE FRAGRANCES		TRACES - 0,10%	TOP NOTE	
SHAMPOO		0,09% - 0,4%	WET	DRY
SHOWER GEL		0,08% - 0,6%	BLOOM	
SOAP		0,1% - 0,6%	FOAM	DRY HAND
DETERGENT		0,7% - 2%	WET	DRY
SOFTENER		0,2% - 0,5%	WET	DRY
APC		0,05% - 0,5%		
CANDLE		0,2% - 0,9%	COLD WAX	BURNING

### DID YOU KNOW ?

Rosa centifolia (the rose with hundred petals), the famous rose cultivated in Grasse (South of France) and in Morocco inspired the name of CENTIFOLETHER®.