

FLORAL

AROMATIC

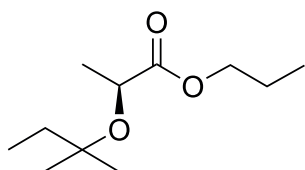
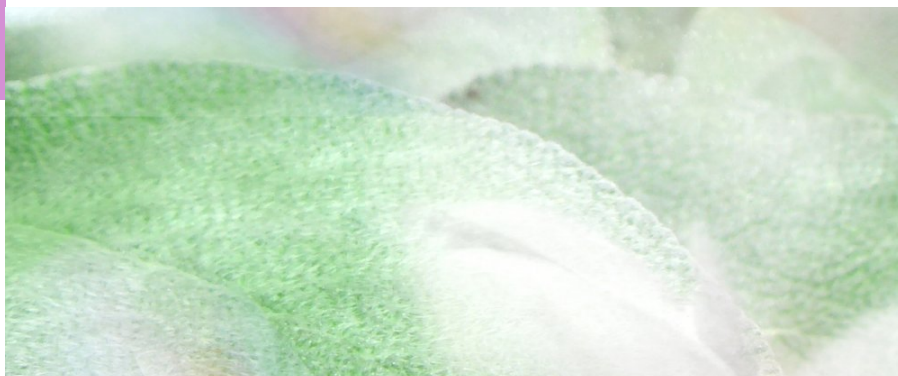
CHEMICAL SYNTHESIS

CAS NUMBER 0319002-92-1
REACH NUMBER 01-0000018277-65
FEMA NUMBER

BIODEGRADABILITY  Partially

GREEN CHEMISTRY SCORE  70 - 100%

Propyl (2S)-2-(1,1-dimethylpropoxy)- propanoate



OLFACTIVE DESCRIPTION

SCLAREOLATE® is a very natural white floral sage note, between Linalol and Linalylacetate.

SCLAREOLATE® recalls clean white floral notes playing within a traditional clary sage aromatic profile.

PERFUMERY USAGE

Extremely stable in composition, SCLAREOLATE®'s true freshness and tenacity empower the signature of a perfume.

SCLAREOLATE® can be used like Linalol, Dihydromyrcenol and CORANOL with high and low dosages for different effects.

Good effect in Citrus / Lavender accords.

TENACITY

Lasts 2 hours on a smelling strip

1 MONTH
3 WEEKS
2 WEEKS
1 WEEK
4 DAYS
3 DAYS
2 DAYS
1 DAY
6 HOURS
3 HOURS
2 HOURS
1 HOUR

PHYSICO-CHEMICAL PROPERTIES

LOG P (MEASURED) 3.17
APPEARANCE LIQUID
FLASHPOINT 87°C
VAPOUR PRESSURE 12.08 Pa at 20°C
MOLECULAR WEIGHT 202
BOILING POINT -

STABILITY & PERFORMANCE

RECOMMENDED APPLICATIONS	STABILITY	CONCENTRATION AVG - MAX	SUBSTANTIVITY & REMARKS	
FINE FRAGRANCES	■■■■■	2% - 7%	TOP NOTE	
SHAMPOO	■■■	4% - 11%	WET	■■■ DRY ●
SHOWER GEL	■■■	3% - 8%	BLOOM	■■■
SOAP	■■■	3% - 8%	FOAM	■■ DRY HAND ●
DETERGENT	■■	3% - 10%	WET	■■ DRY ●
SOFTENER	■■■	4% - 12%	WET	■■■ DRY ●
APC	■■	2% - 8%		
CANDLE	■■■	4% - 19%	COLD WAX ■■	BURNING ■■

DID YOU KNOW ?

The key success factor of SCLAREOLATE®: a molecule that complies with every safety factor as well as being highly performant and interesting in its olfactive facets.