

FLORAL

FRUITY

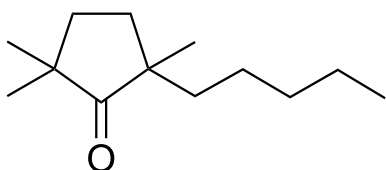
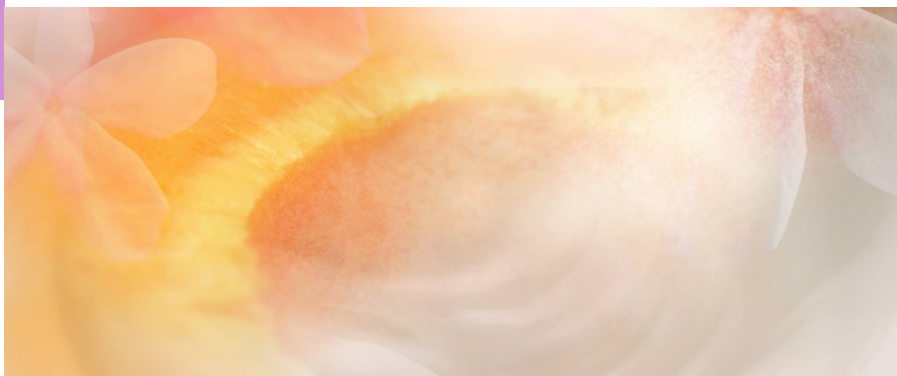
CHEMICAL SYNTHESIS

CAS NUMBER 0065443-14-3
REACH NUMBER 01-2120121429-60
FEMA NUMBER

BIODEGRADABILITY  Partially

GREEN CHEMISTRY SCORE  70 - 100%

Cyclopentanone, 2,2,5-trimethyl-5-pentyl-



OLFACTIVE DESCRIPTION

Jasmine, lactonic and fruity odor.

Reminiscent of peach and apricot with a hint of lavender.

PERFUMERY USAGE

VELOUTONE® has very wide use because of its exceptional stability.

It delivers a wonderful soft floral note, in jasmine, tuberose and honeysuckle creations as well as muguet lilac and fruity notes.

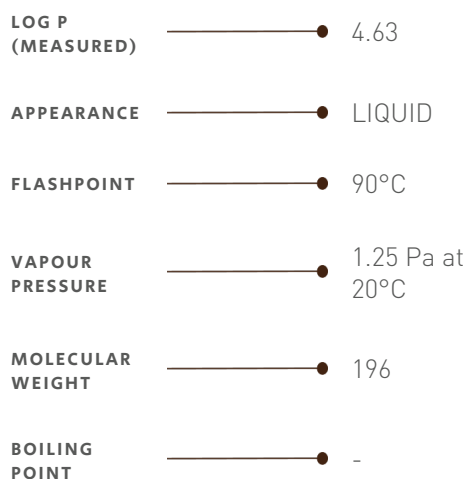
It gives interesting effects in lavender and herbal fragrances.

TENACITY

Lasts 2 days on a smelling strip



PHYSICO-CHEMICAL PROPERTIES



STABILITY & PERFORMANCE

RECOMMENDED APPLICATIONS	STABILITY	CONCENTRATION AVG - MAX	SUBSTANTIVITY & REMARKS	
FINE FRAGRANCES	■■■■	0,02% - 0,2%	TOP AND HEART NOTE	
SHAMPOO	■■■■	0,10% - 0,8%	WET ■■■	DRY ■■
SHOWER GEL	■■■■	0,07% - 0,9%	BLOOM ■■■	
SOAP	■■■■	0,07% - 0,8%	FOAM ■■■■	DRY HAND ■■■■
DETERGENT	■■■■	0,09% - 0,4%	WET ■■■■	DRY ●
SOFTENER	■■■■	0,1% - 0,8%	WET ■■■■	DRY ■■■
APC	■■■■	0,2% - 0,9%		
CANDLE	■■■	0,07% - 0,5%	COLD WAX ■■■	BURNING ■■

DID YOU KNOW ?

VELOUTONE® is part of HEDIONE® family.

HEDIONE® was discovered by Firmenich scientist, Dr. Edouard Demole in 1958 as part of the methyl jasmonate synthesis.

HEDIONE® brings to mind the old adage, "He who wishes to be heard will always whisper".