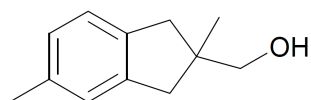


Floral

LILYFLORE®

955210

Muguet



[2,5-Dimethyl-2,3-dihydro-1H-inden-2-yl]  
methanol

## REFERENCES

CAS number: **0285977-85-7**

FEMA number: -

REACH number: **01-0000018289-60**

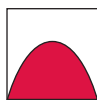
Stabilizer: **None added**

Solvent: **None added**

Firmenich code: **955210**

## Tenacity

Lasts 1 month  
on a smelling strip.



## OLFACTIVE NOTE

LILYFLORE® is a beautiful muguet floral note between Hydroxycitronellal, Lilial®, and Lyrat®.

## PERFUMERY USAGE

LILYFLORE® has a long lasting floral effect with substantial volume and excellent stability. It brings a moist fresh note, similar to Lyrat®, in green florals.

Lilial® (owned by Givaudan)

Lyrat® (owned by IFF)

## PHYSICO-CHEMICAL PROPERTIES

appearance	white liquid, could crystallize
flashpoint	>100°C
vapour pressure	0.4 Pa at 20°C
purity	min 99%
log p (measured)	3.12
molecular weight	176

## STABILITY & PERFORMANCE

RECOMMENDED APPLICATIONS	STABILITY	TYPICAL % USE	SUBSTANTIVITY & REMARKS	
<b>fine fragrances</b>	■■■■■	traces - 5%	<b>Top, heart and base note</b>	
<b>shampoo</b>	■■■■	traces - 5%	wet: ■■■■	dry: ■■■■
<b>shower gel</b>	■■■■	traces - 5%	bloom: ■■■■	
<b>soap</b>	■■■■■	traces - 5%	foam: ■■■■	dry hand: ■■■■
<b>detergent</b>	■■■■■	traces - 2%	wet: ■■■■	dry: ■■■■
<b>softener</b>	■■■■■	traces - 2%	wet: ■■■■	dry: ■■■■
<b>APC</b>	■■■■	traces - 2%	-	
<b>candle</b>	■■■■	traces - 5%	cold wax: ■■■■	burning: ■■■■