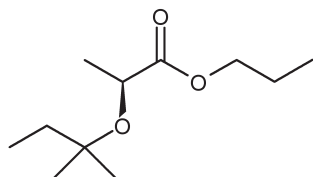


Floral

Aromatic

SCLAREOLATE®

981816



Propyl (2S)-2-(1,1-dimethylpropoxy)propanoate

REFERENCES

CAS number: **0319002-92-1**

FEMA number: -

REACH number: **01-0000018277-65**Stabilizer: **None added**Solvent: **None added**Firmenich code: **981816**

Tenacity

Lasts 2 hours
on a smelling strip.

1 month

3 weeks

2 weeks

1 week

4 days

3 days

2 days

1 day

6 hours

3 hours

2 hours

1 hour

OLFACTIVE NOTE

SCLAREOLATE® is a very natural white floral sage note, between Linalol and Linalylacetate.

PERFUMERY USAGE

SCLAREOLATE® can be used like Linalol, Dihydromyrcenol and Coranol with high and low dosages for different effects.

PHYSICO-CHEMICAL PROPERTIES

appearance	Colourless liquid
flashpoint	87°C
vapour pressure	13.0 Pa at 20°C
purity	min 99%
log p (measured)	3.17
molecular weight	202

STABILITY & PERFORMANCE

RECOMMENDED APPLICATIONS	STABILITY	TYPICAL % USE	SUBSTANTIVITY & REMARKS	
fine fragrances	■■■■	0.5 - 5%	Top note	
shampoo	■■■	1 - 10%	wet: ■■■	dry: ■
shower gel	■■■	1 - 10%	bloom: ■■■	
soap	■■■	0.5 - 5%	foam: ■■	dry hand: ■
detergent	■■■	0.5 - 5%	wet: ■■	dry: ■
softener	■■■	0.5 - 5%	wet: ■■■	dry: ■
APC	■■■	0.5 - 5%	-	
candle	■■■	1 - 10%	cold wax: ■■	burning: ■■