

WOODY

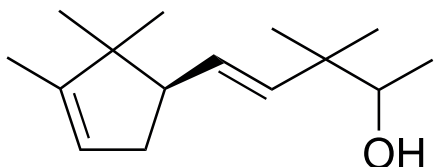
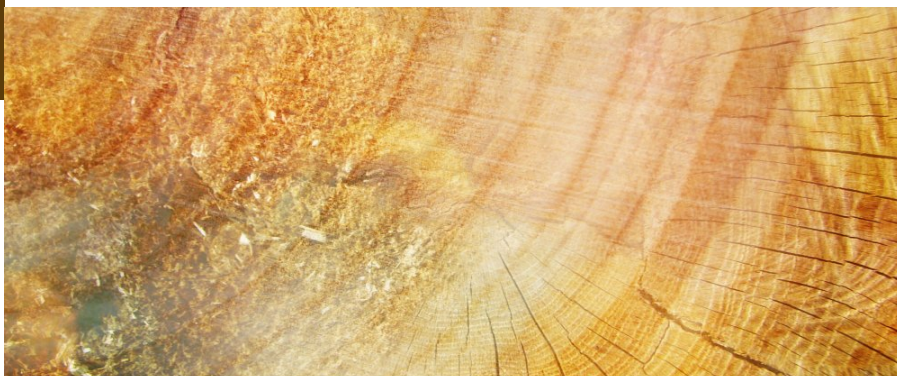
CHEMICAL SYNTHESIS

CAS NUMBER 0107898-54-4
REACH NUMBER 01-0000015895-58
FEMA NUMBER

RENEWABLE CARBON  >50%

GREEN CHEMISTRY SCORE  50 - 70%

4-Penten-2-ol, 3,3-dimethyl-5-[(2,2,3-trimethyl-3-cyclopenten-1-yl)-



OLFACTIVE DESCRIPTION

A rich and diffusive sandalwood note offering great strength.

PERFUMERY USAGE

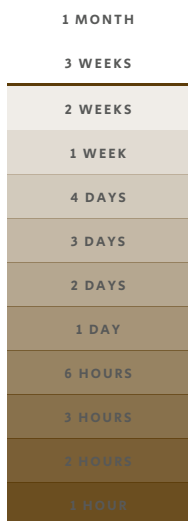
POLYSANTOL® is a very substantive and cost efficient material.

It gives wonderful diffusive sandalwood effects wherever it is used.

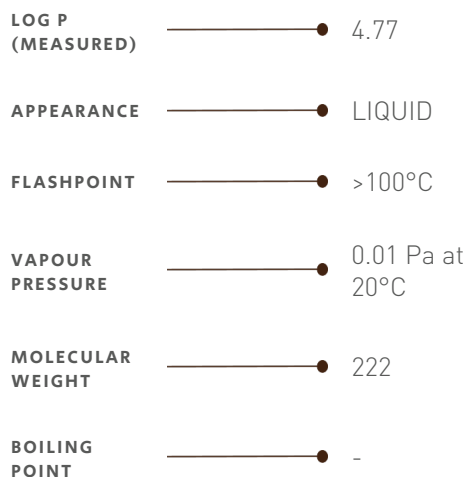
A real sandalwood character can be obtained throughout the whole perfume in top, middle and base notes.

TENACITY

Lasts 2 weeks on a smelling strip



PHYSICO-CHEMICAL PROPERTIES



STABILITY & PERFORMANCE

RECOMMENDED APPLICATIONS	STABILITY	CONCENTRATION AVG - MAX	SUBSTANTIVITY & REMARKS	
FINE FRAGRANCES	■■■■	0,6% - 2%	HEART AND BASE NOTE	
SHAMPOO	■■■■	0,3% - 0,9%	WET ■■■■	DRY ■■■
SHOWER GEL	■■■■	0,4% - 1%	BLOOM ■■■■	
SOAP	■■■■	0,3% - 1,0%	FOAM ■■■■	DRY HAND ■■■■
DETERGENT	■■■■	0,3% - 0,7%	WET ■■■	DRY ■■■
SOFTENER	■■■■	0,3% - 1,0%	WET ■■■■	DRY ■■■
APC	■■■	0,1% - 0,4%		
CANDLE	■■■■	0,5% - 2%	COLD WAX ■■■■	BURNING ■■■

DID YOU KNOW ?

Firmenich research allowed the advent of woody sandalwood notes in the perfumery industry, until then limited by the natural production of natural sandalwood.