

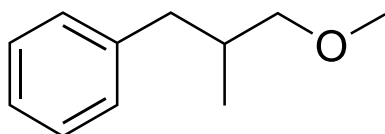
FLORAL

CHEMICAL SYNTHESIS

Benzene, (3-methoxy-2-methylpropyl)-



CAS NUMBER 0120811-92-9
REACH NUMBER 01-2120138933-52
FEMA NUMBER



OLFACTIVE DESCRIPTION

This natural floral, green note has a rose petal character with hints of exotic fruits.

PERFUMERY USAGE

Excellent with both rose and green notes.

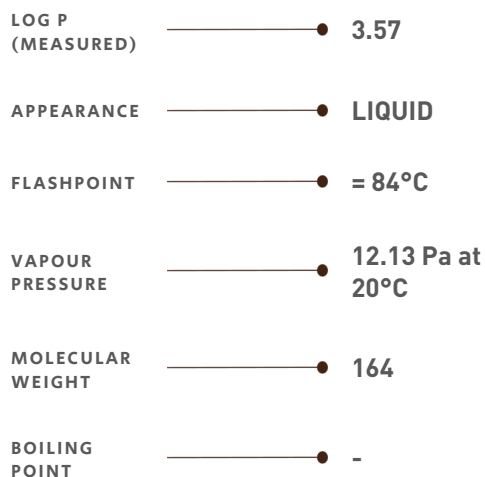
Extremely stable including in chlorine bleach. An incredible stability with a so distinctive top note...

TENACITY

Lasts 3 hours on a smelling strip



PHYSICO-CHEMICAL PROPERTIES



STABILITY & PERFORMANCE

RECOMMENDED APPLICATIONS	STABILITY	CONCENTRATION AVG - MAX	SUBSTANTIVITY & REMARKS	
FINE FRAGRANCES	■■■■	TRACES - 0,10%	TOP NOTE	
SHAMPOO	■■■	0,09% - 0,4%	WET	■■■■ DRY ■■
SHOWER GEL	■■■	0,08% - 0,6%	BLOOM	■■■
SOAP	■■■	0,1% - 0,6%	FOAM	■■■ DRY HAND ■■
DETERGENT	■■■	0,7% - 2%	WET	■■■ DRY ●
SOFTENER	■■■	0,2% - 0,5%	WET	■■■ DRY ●
APC	■■■	0,05% - 0,5%		
CANDLE	■■■	0,2% - 0,9%	COLD WAX	■■■■ BURNING ■■

DID YOU KNOW ?

Rosa centifolia (the rose with hundred petals), the famous rose cultivated in Grasse (South of France) and in Morocco inspired the name of CENTIFOLETHER®.