

FLORAL

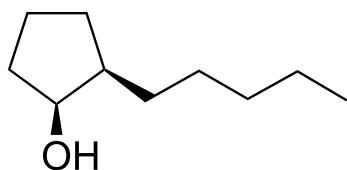
WHITE FLOWER

CHEMICAL SYNTHESIS

2-Pentylcyclopentan-1-ol



CAS NUMBER 0084560-00-9
REACH NUMBER 01-2120121430-77
FEMA NUMBER



OLFACTIVE DESCRIPTION

DELPHOL HC® (commercial name of CYCLOPENTOL HC) has a floral jasmine character with a slight cis-jasmone note.

It is reminiscent of magnolia and tea with a fruity undertone.

PERFUMERY USAGE

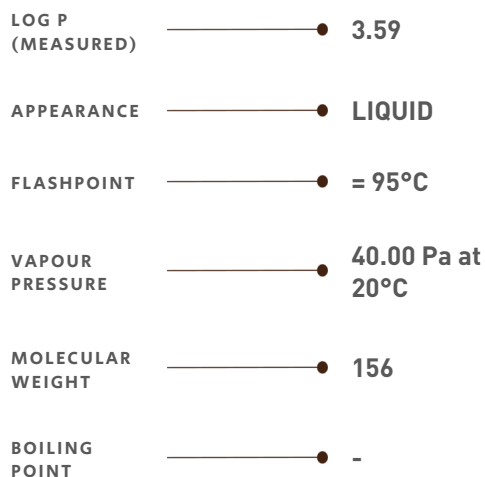
DELPHOL HC® is excellent in floral and fruity fragrances. It enriches white floral notes and is exceptionally stable.

TENACITY

Lasts 2 days on a smelling strip



PHYSICO-CHEMICAL PROPERTIES



STABILITY & PERFORMANCE

| RECOMMENDED APPLICATIONS | STABILITY | CONCENTRATION AVG - MAX | SUBSTANTIVITY & REMARKS | |
|--------------------------|-----------|-------------------------|-------------------------|--------------|
| FINE FRAGRANCES | ■■■■ | 0,03% - 0,2% | TOP AND HEART NOTE | |
| SHAMPOO | ■■■ | 0,2% - 1,0% | WET ■■■■ | DRY ■■■ |
| SHOWER GEL | ■■■ | 0,1% - 0,6% | BLOOM ■■■ | |
| SOAP | ■■■■ | 0,3% - 2% | FOAM ■■■ | DRY HAND ■■■ |
| DETERGENT | ■■■■ | 0,7% - 4% | WET ■■■ | DRY ■■■ |
| SOFTENER | ■■■■ | 0,4% - 1% | WET ■■■ | DRY ■■■ |
| APC | ■■■ | 0,7% - 4% | | |
| CANDLE | ■■■ | 0,4% - 1% | COLD WAX ■■■■ | BURNING ■■■■ |

DID YOU KNOW ?

DELPHOL® HC is part of HEDIONE® family.

HEDIONE® was discovered by Firmenich scientist, Dr. Edouard Demole in 1958 as part of the methyl jasmonate synthesis.

HEDIONE® brings to mind the old adage, "He who wishes to be heard will always whisper".