

FLORAL

WHITE FLOWER

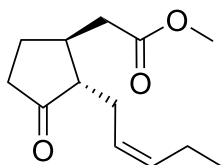
CHEMICAL SYNTHESIS

CAS NUMBER 0039924-52-2

REACH NUMBER

FEMA NUMBER 3410

Cyclopentaneacetic acid, 3-oxo-2-(2-pentenyl)-, methyl ester



### OLFACTIVE DESCRIPTION

Odor reminiscent of the floral heart of jasmine. Petal-like, soft and unctuous. Very elegant and natural.

SPLENDIONE® is the commercial name of METHYL JASMONATE.

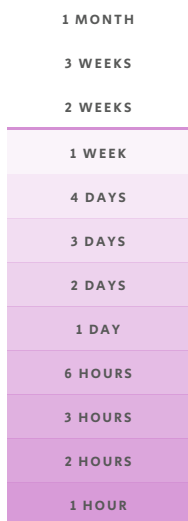
### PERFUMERY USAGE

SPLENDIONE® gives rich long-lastingness, and substantive floral effects in all perfumes at very low dosages.

It performs particularly well in white floral like jasmine and lily of the valley with its capacity to enhance aldehydic florals and chypre fragrances.

### TENACITY

Lasts 1 week on a smelling strip



### PHYSICO-CHEMICAL PROPERTIES

LOG P (MEASURED) 2.33

APPEARANCE LIQUID

FLASHPOINT >100°C

VAPOUR PRESSURE 0.02 Pa at 20°C

MOLECULAR WEIGHT 224

BOILING POINT -

### STABILITY & PERFORMANCE

RECOMMENDED APPLICATIONS	STABILITY	CONCENTRATION AVG - MAX	SUBSTANTIVITY & REMARKS
FINE FRAGRANCES	■■■■	0,07% - 0,6%	TOP AND HEART NOTE
SHAMPOO	■■■	TRACES - 0,05% WET	■■■■ DRY ■■■■
SHOWER GEL	■■■	TRACES - 0,2% BLOOM	■■■
SOAP	■■■	TRACES - 0,06% FOAM	■■■ DRY HAND ■■■
DETERGENT	■■■■	0,02% - 0,04% WET	■■■ DRY ■■■
SOFTENER	■■■■	0,04% - 0,1% WET	■■■■ DRY ■■■■
APC	■■■	TRACES	
CANDLE	■■■	0,01% - 0,09% COLD WAX	■■■ BURNING ■■■

### DID YOU KNOW ?

HEDIONE®, cornerstone of an entire family of molecules, was discovered by Firmenich scientist, Dr. E. Demole in 1958 as part of the methyl jasmonate synthesis.

HEDIONE® brings to mind the old adage, "He who wishes to be heard will always whisper".